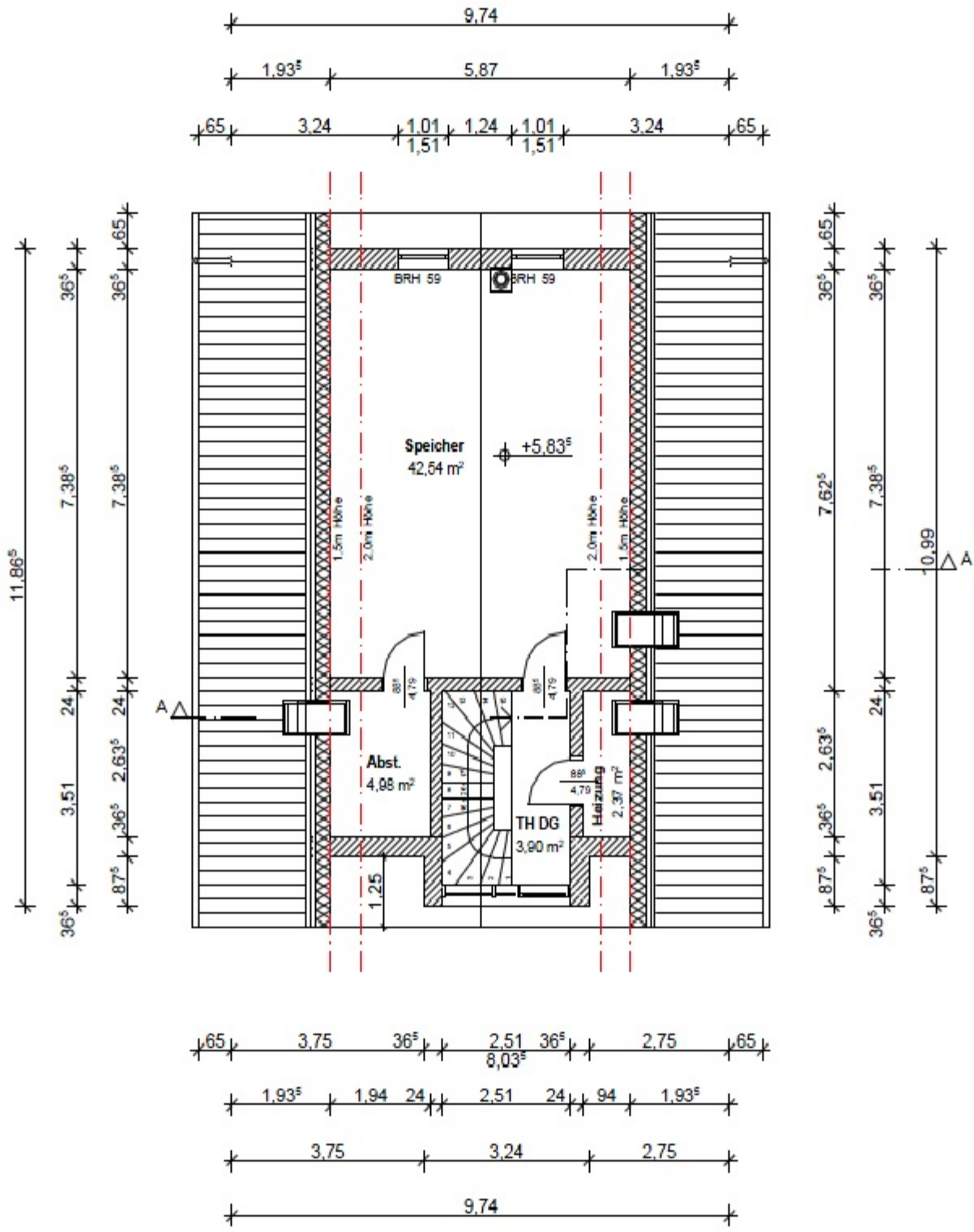
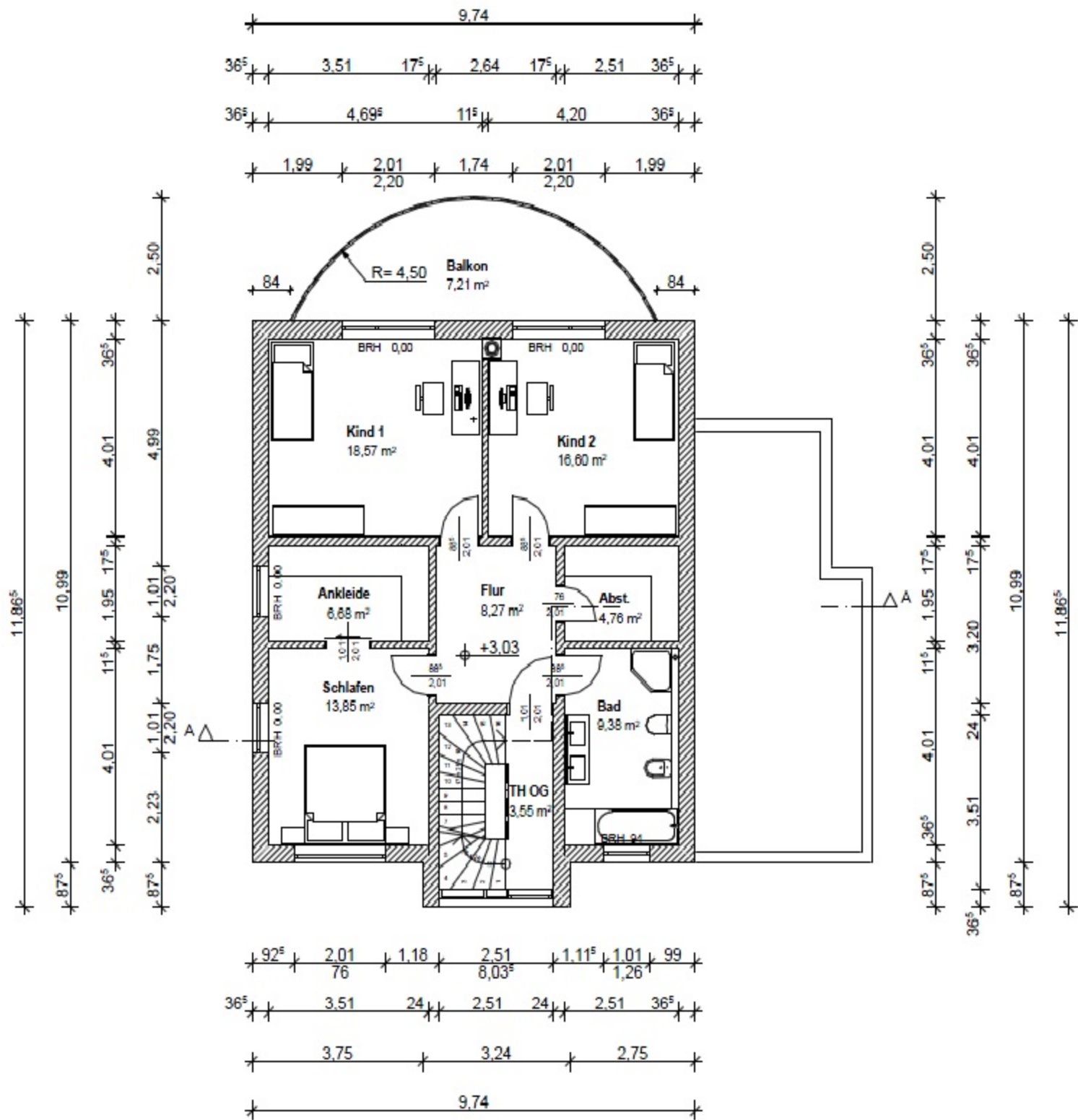
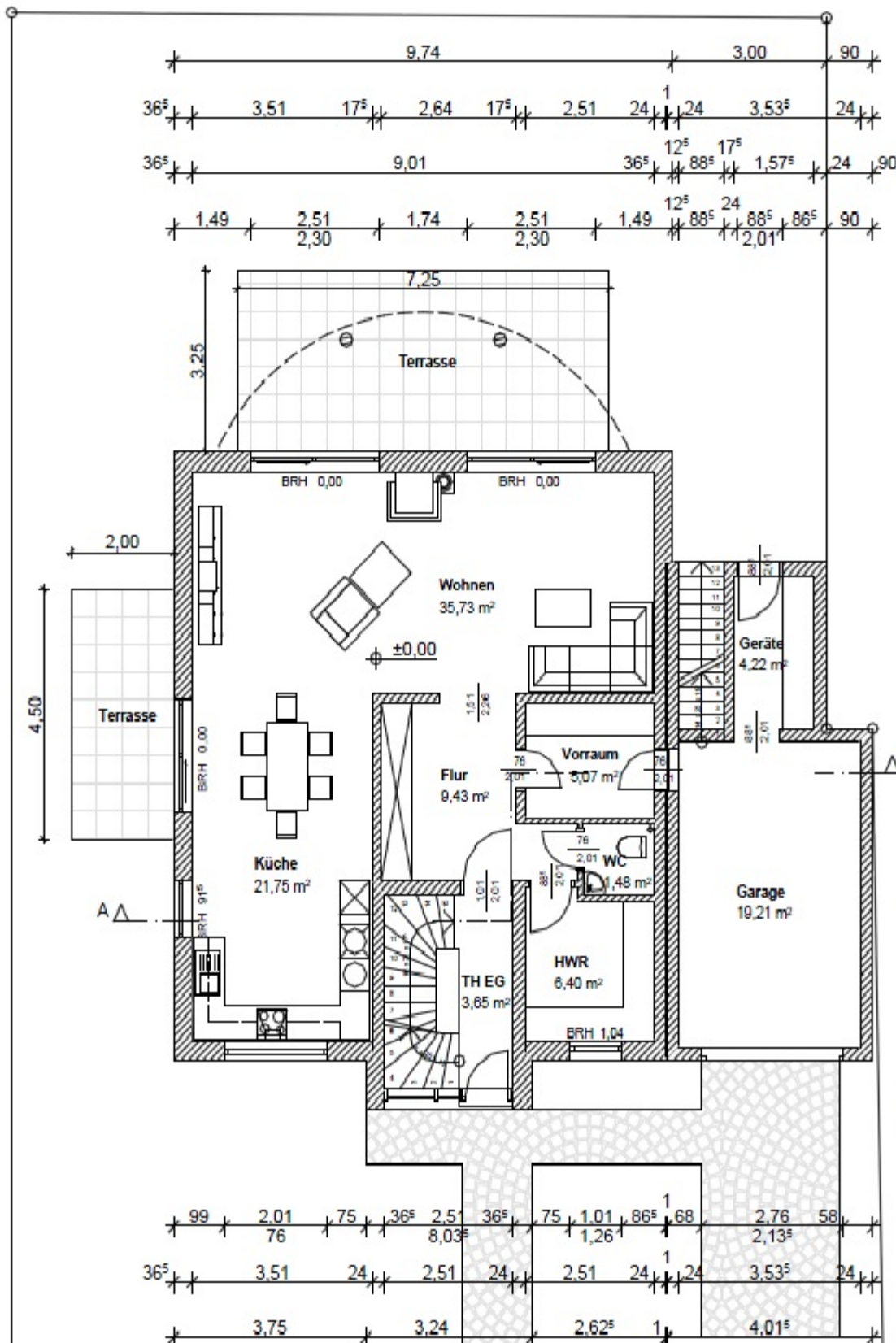
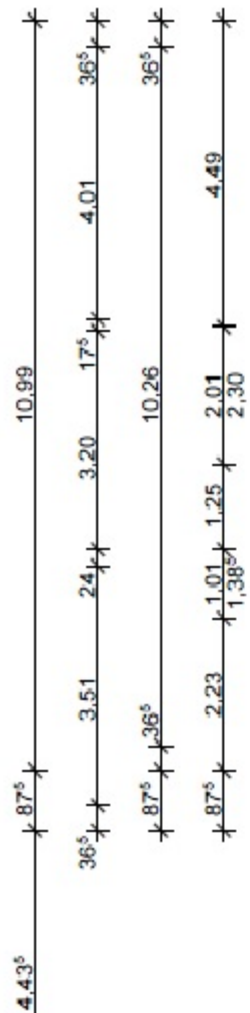
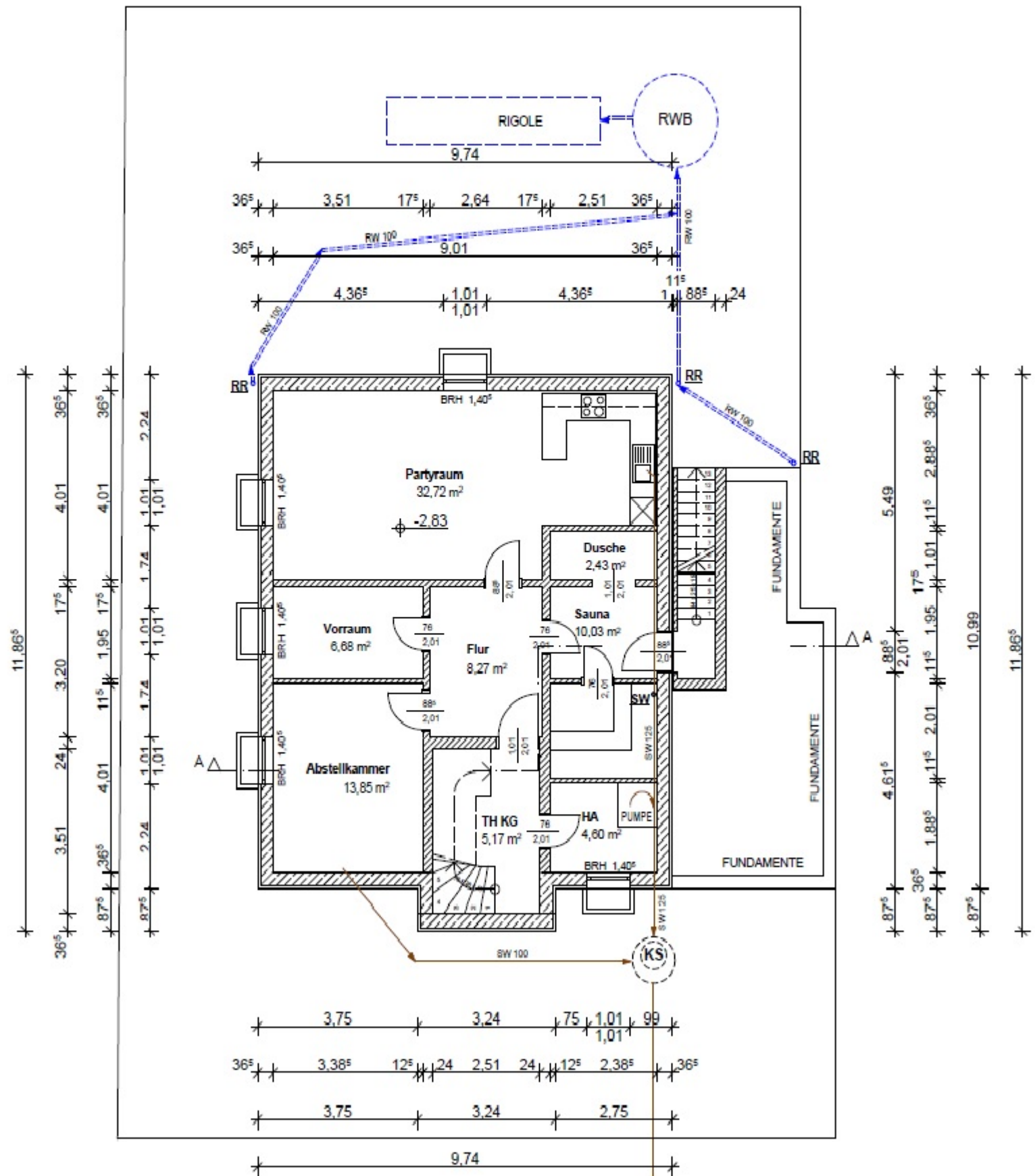


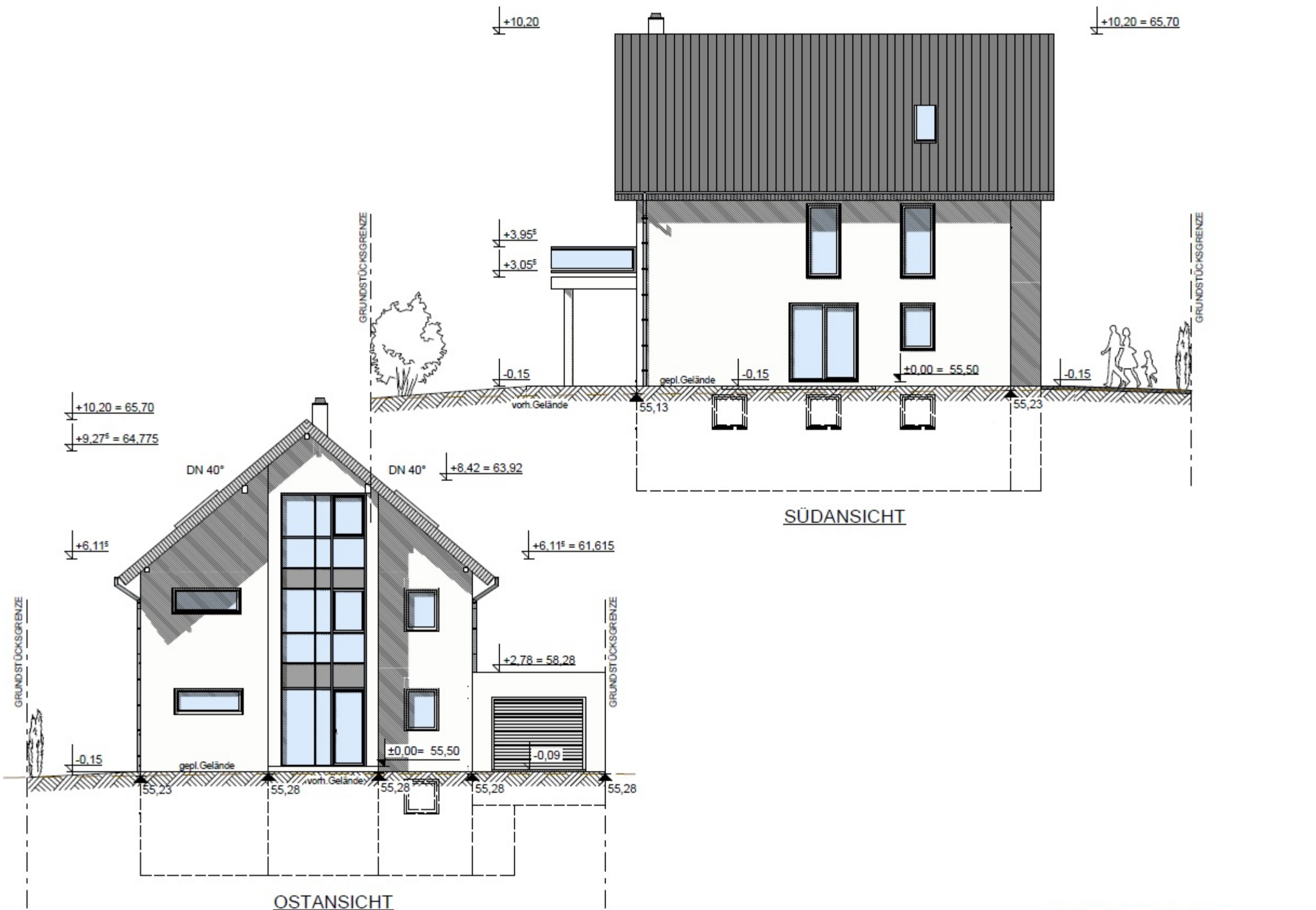
SCHNITT A - A

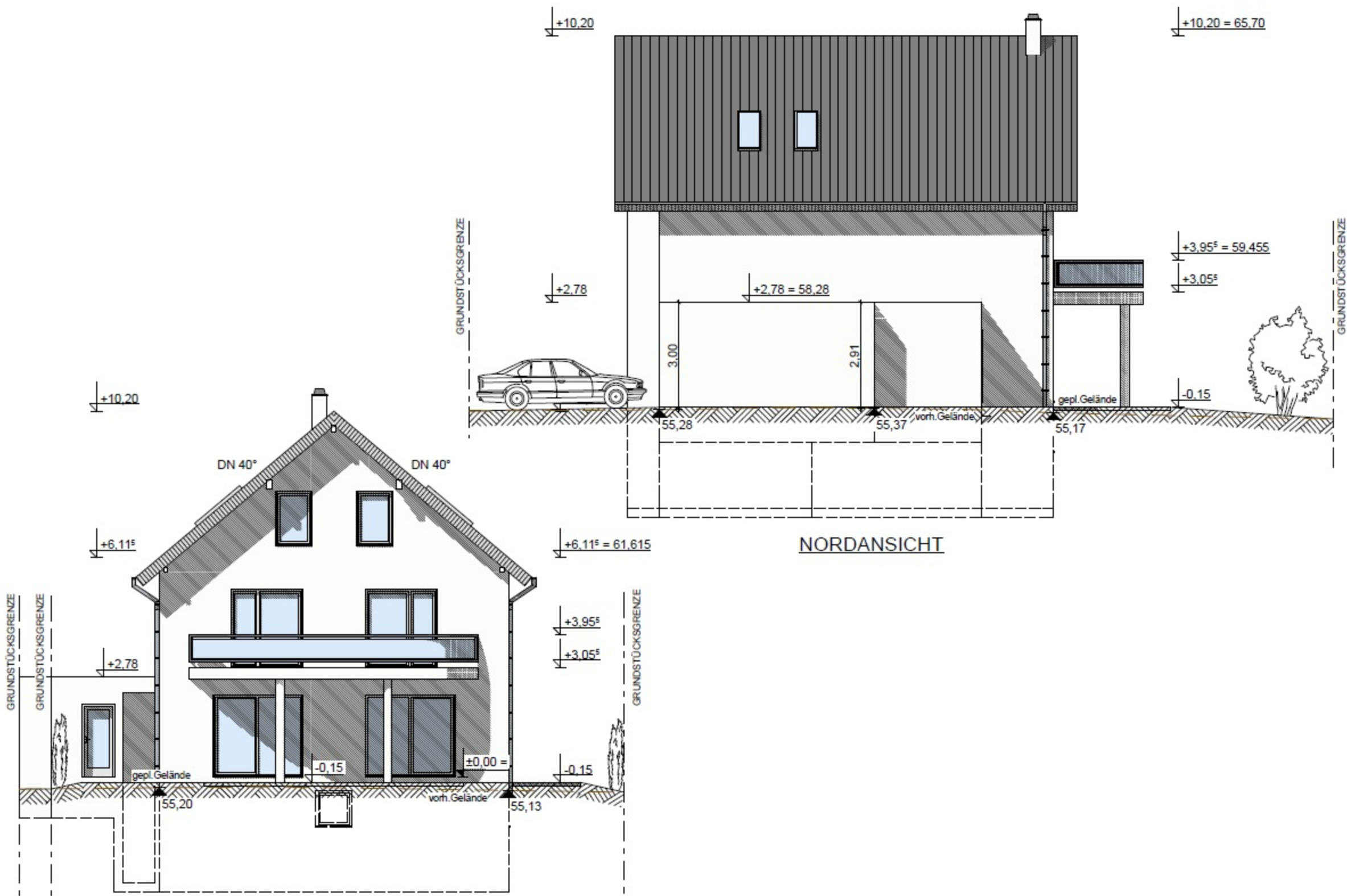












+10,20

+10,20 = 65,70

+2,78

+2,78 = 58,28

+3,95^s = 59,455

+3,05^s

-0,15

+10,20

+6,11^s

+6,11^s = 61,615

+3,95^s

+3,05^s

-0,15

-0,15

NORDANSICHT

WESTANSICHT